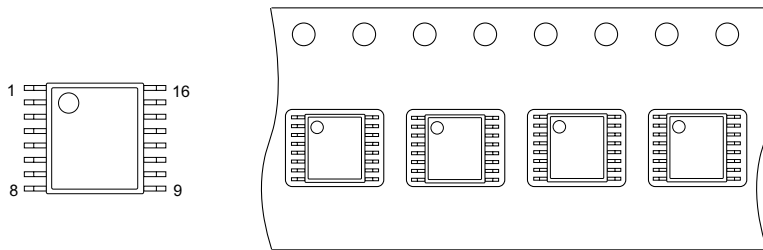
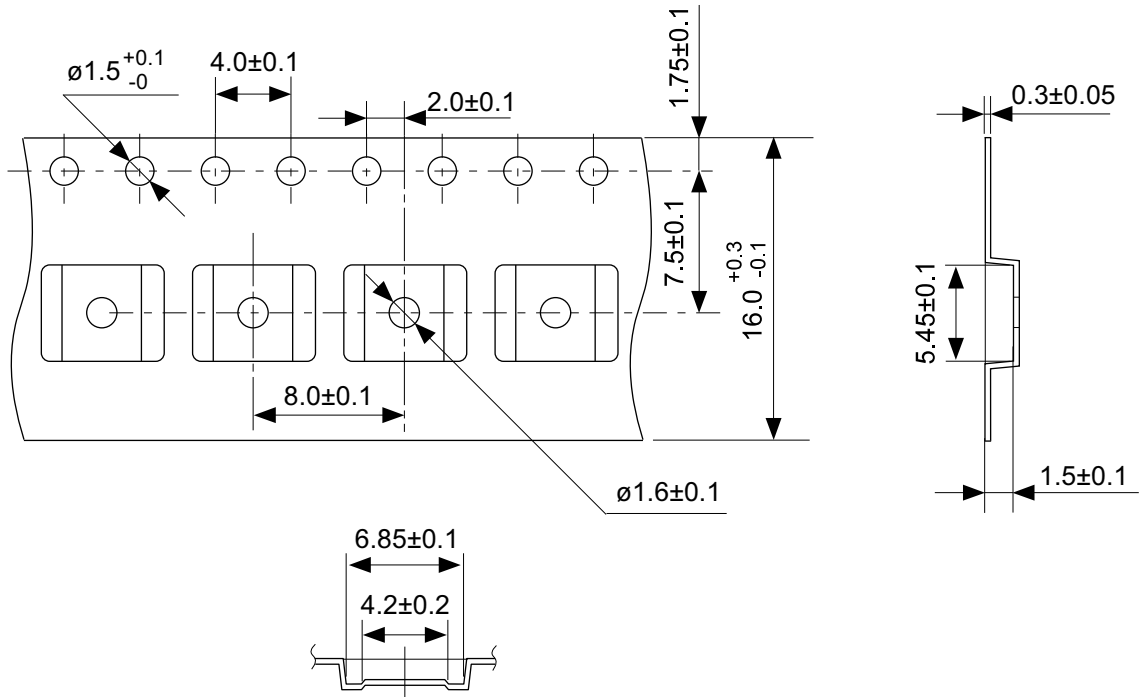


No. FR016-A-P-SD-1.0

TITLE	HTSSOP16-A-PKG Dimensions
No.	FR016-A-P-SD-1.0
ANGLE	
UNIT	mm
ABLIC Inc.	

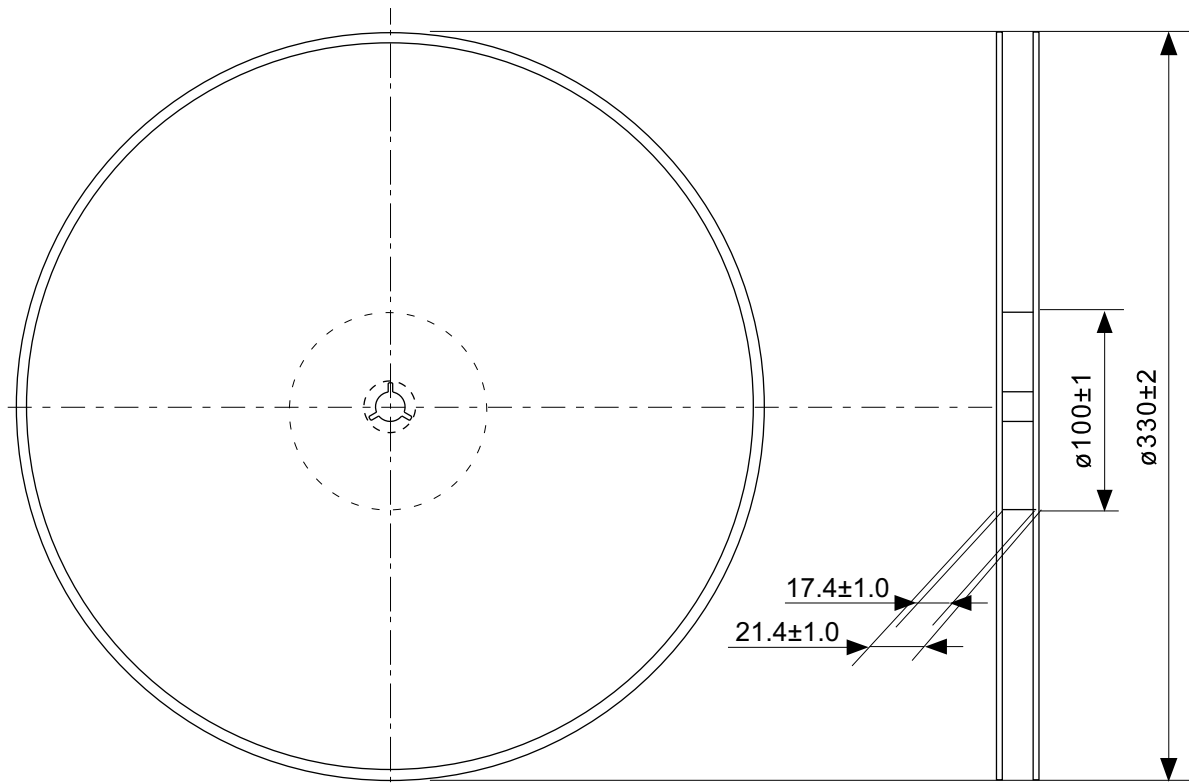


→
Feed direction

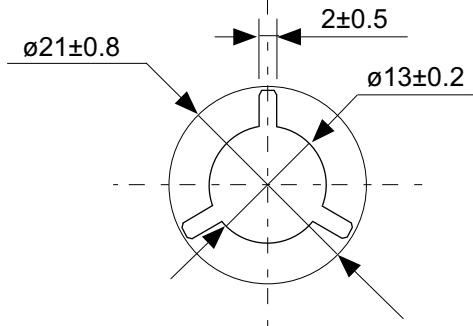
No. FR016-A-C-SD-1.0

TITLE	HTSSOP16-A-Carrier Tape
No.	FR016-A-C-SD-1.0
ANGLE	
UNIT	mm
ABLIC Inc.	

The information herein is subject to change without notice.



Enlarged drawing in the central part



No. FR016-A-R-SD-1.0

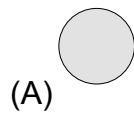
TITLE	HTSSOP16-A- Reel		
No.	FR016-A-R-SD-1.0		
ANGLE		QTY.	4,000
UNIT	mm		
ABLIC Inc.			

The information herein is subject to change without notice.

(1)	(2)	(3)	(4)	(5)	(6)	(7)
-----	-----	-----	-----	-----	-----	-----

(8)	(9)	(10)	(11)	(12)	(13)	(14)
-----	-----	------	------	------	------	------

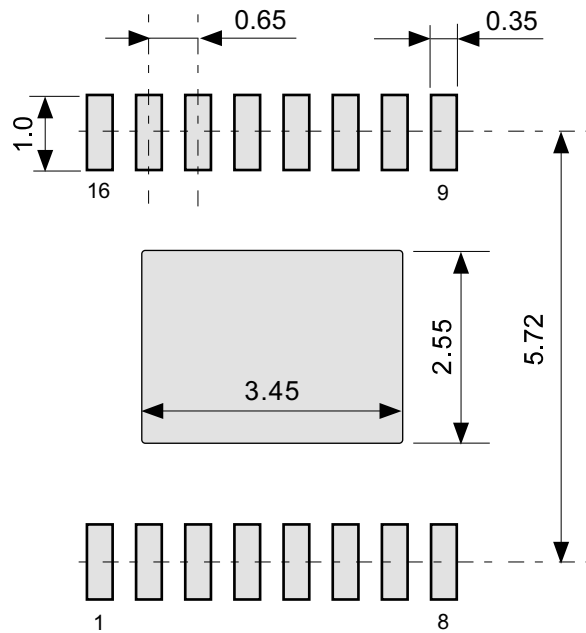
(15)	(16)	(17)	(18)	(19)
------	------	------	------	------



- (1) to (9) : Product code
- (10) : Assembly code
- (11) : Year of assembly
- (12) : Month of assembly
- (13) to (19) : Lot No. code
- (A) : 1-pin mark

No. FR016-A-M-SD-1.0

TITLE	HTSSOP16-A-Markings		
No.	FR016-A-M-SD-1.0		
ANGLE			
UNIT		TYPE	LASER
ABLIC Inc.			



No. FR016-A-L-SD-1.0

TITLE	HTSSOP16-A -Land Recommendation
No.	FR016-A-L-SD-1.0
ANGLE	
UNIT	mm
ABLIC Inc.	