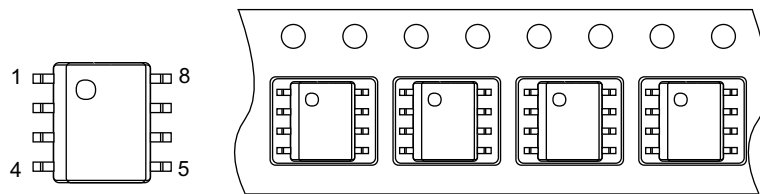
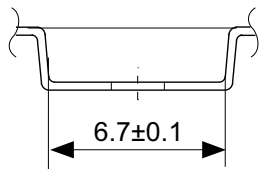
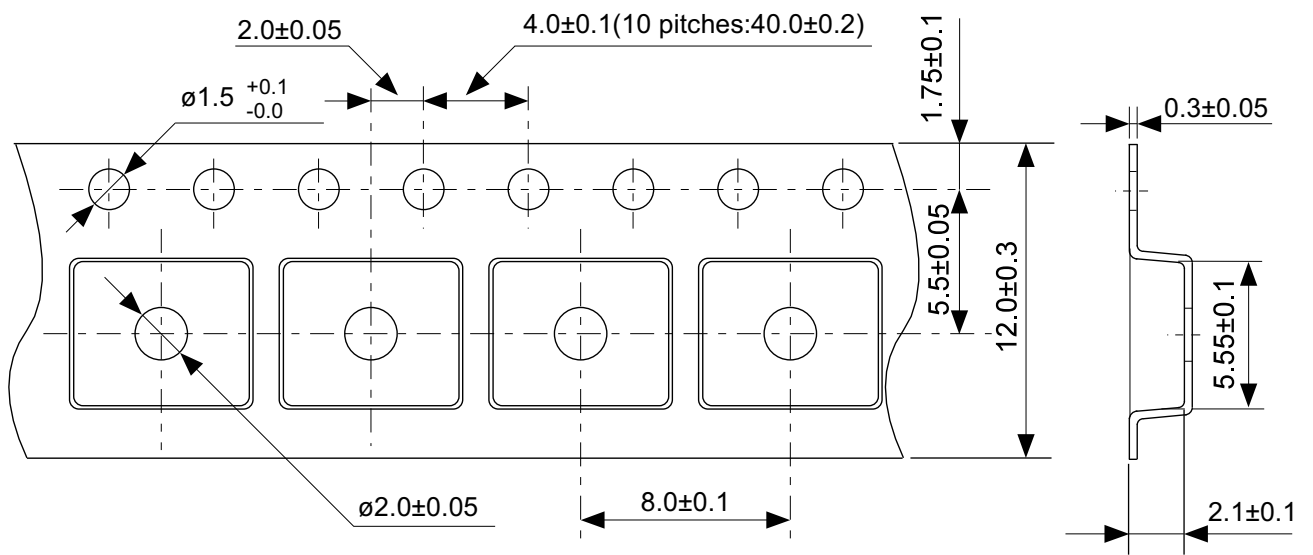


No. FH008-A-P-SD-2.0

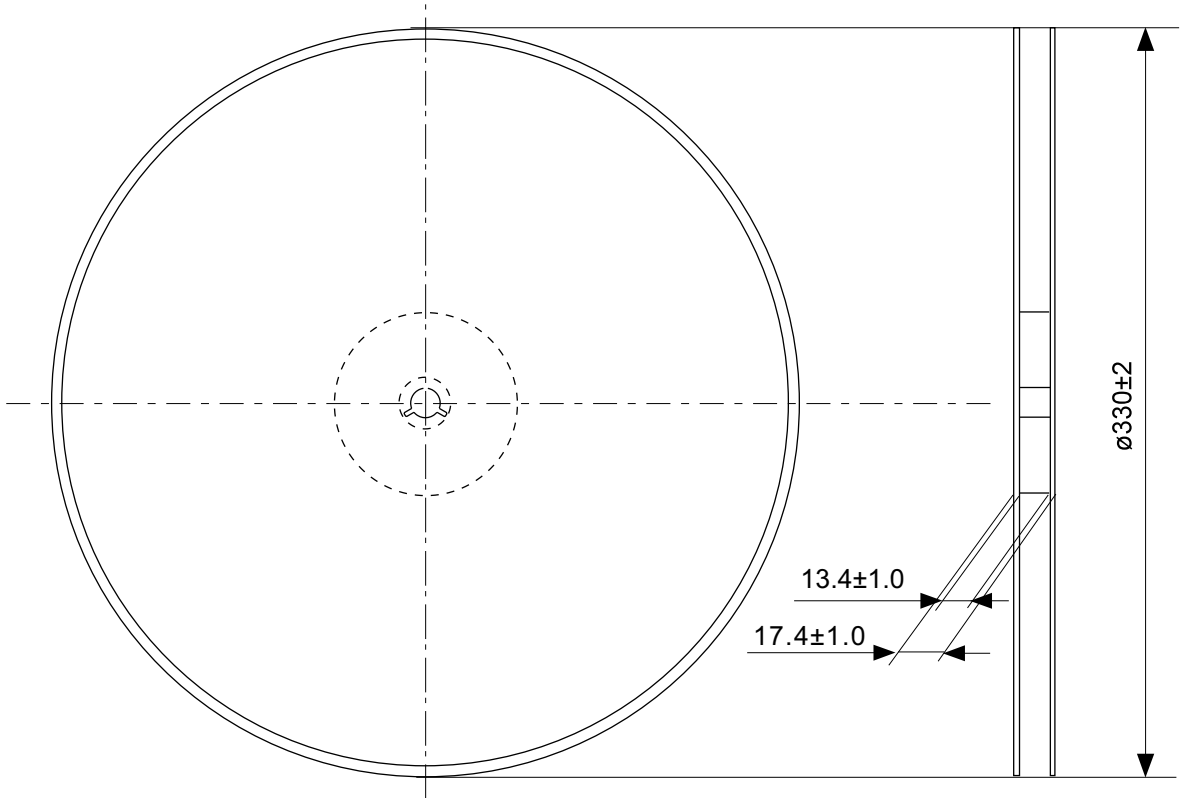
TITLE	HSOP8A-A-PKG Dimensions
No.	FH008-A-P-SD-2.0
ANGLE	
UNIT	mm
ABLIC Inc.	



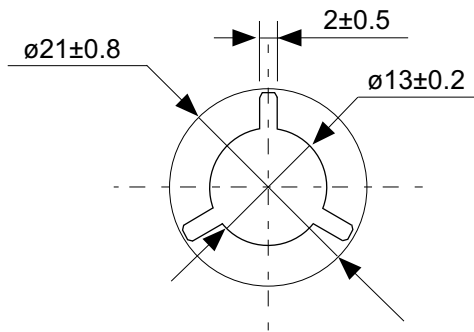
→
Feed direction

No. FH008-A-C-SD-1.0

TITLE	HSOP8A-A-Carrier Tape
No.	FH008-A-C-SD-1.0
ANGLE	
UNIT	mm
ABLIC Inc.	

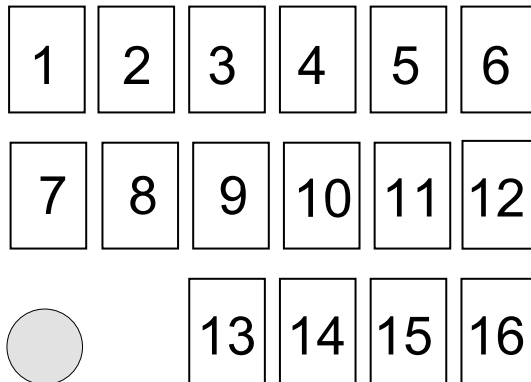


Enlarged drawing in the central part



No. FH008-A-R-SD-1.1

TITLE	HSOP8A-A-Reel		
No.	FH008-A-R-SD-1.1		
ANGLE		QTY.	4,000
UNIT	mm		
ABLIC Inc.			



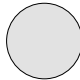
- 1 to 9 : Product code
- 10 : Assembly code
- 11 : Year of assembly
- 12 : Month of assembly
- 13 to 16 : Lot No. code
- (1) : 1-pin mark

No. FH008-A-M-SD-1.0

TITLE	HSOP8A-A-Markings		
No.	FH008-A-M-SD-1.0		
ANGLE			
UNIT		TYPE	LASER
ABLIC Inc.			

1	2	3	4	5	6	7
---	---	---	---	---	---	---

8	9	10	11	12	13	14
---	---	----	----	----	----	----

(1) 	15	16	17	18
---	----	----	----	----

1 to 11 : Product code

12 : Assembly code

13 : Year of assembly

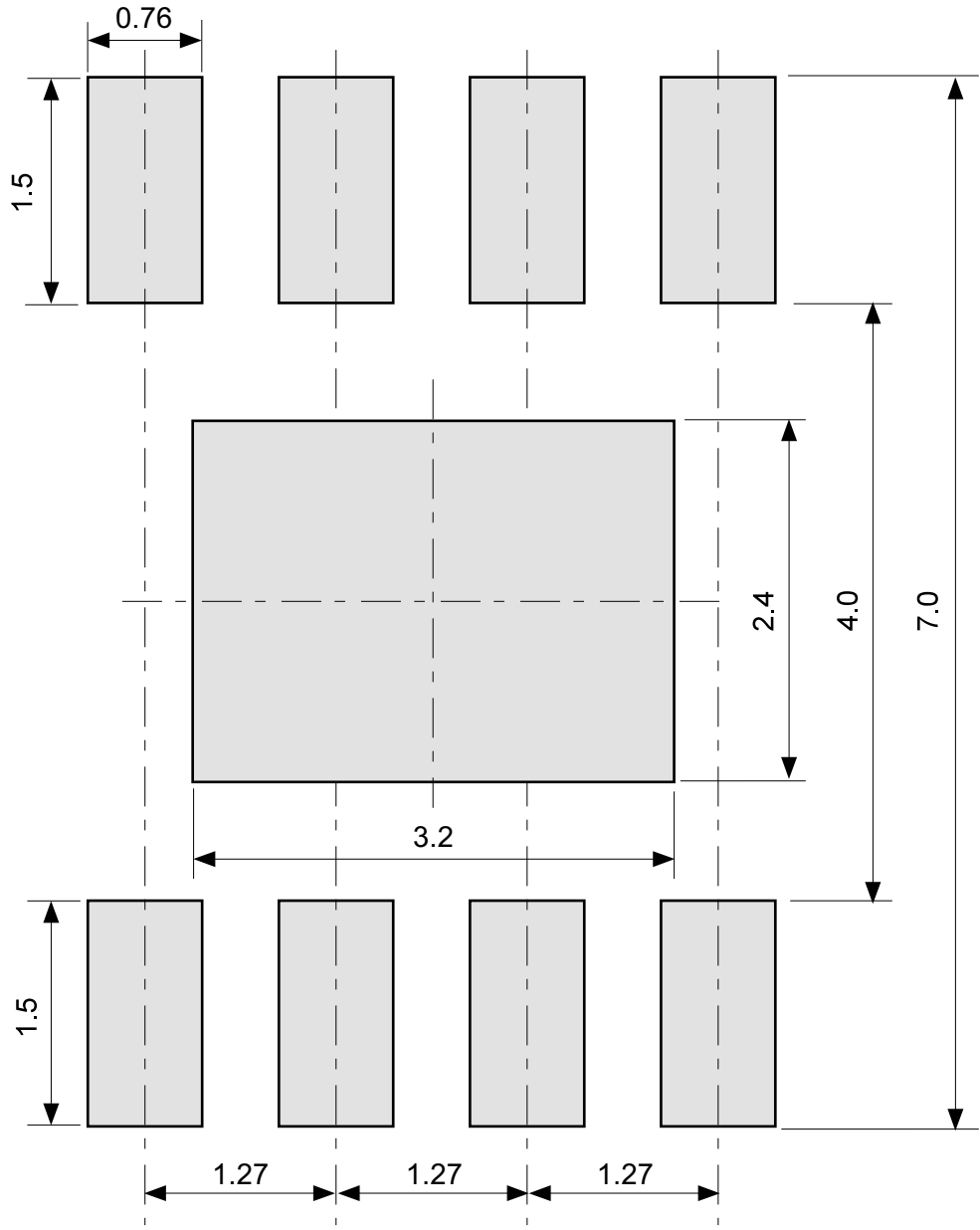
14 : Month of assembly

15 to 18 : Lot No. code

(1) : 1-pin mark

No. FH008-A-M-S1-1.0

TITLE	HSOP8A-A-Markings		
No.	FH008-A-M-S1-1.0		
ANGLE			
UNIT		TYPE	LASER
ABLIC Inc.			



No. FH008-A-L-SD-1.0

TITLE	HSOP8A-A -Land Recommendation
No.	FH008-A-L-SD-1.0
ANGLE	
UNIT	mm
ABLIC Inc.	